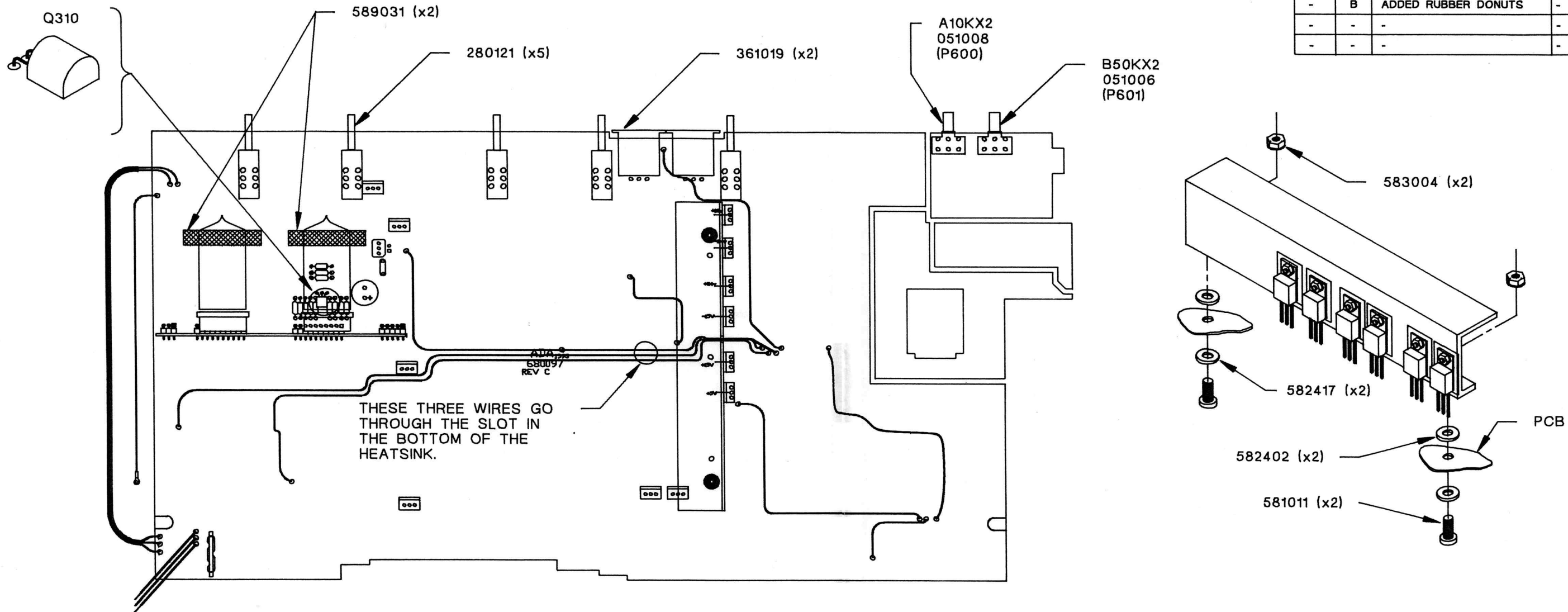
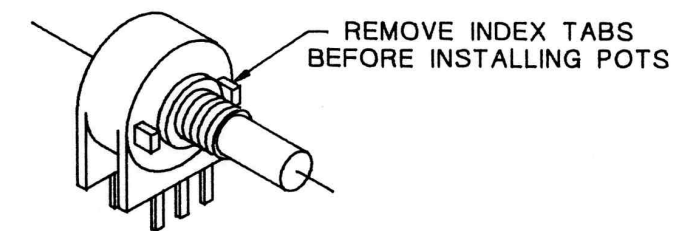


REVISION HISTORY				
ZONE	REV.	DESCRIPTION	SIGNATURE	DATE
-	A	REV C PCB; DWG RELEASE	-	10/7/93
-	B	ADDED RUBBER DONUTS	-	11/11/93
-	-	-	-	-
-	-	-	-	-



NOTES:

1. REMOVE INDEX TABS FROM POTS, AND INSTALL AS SHOWN.
2. INSTALL 280121 (2P2T BANK SWITCH) IN 5 PLACES, AS SHOWN.
3. INSTALL 361019, MALE XLR JACKS, IN 2 PLACES, AS SHOWN.
4. INSTALL HEATSINK ASSEMBLY, USING THE HARDWARE SHOWN. ROUTE THREE OF THE GROUND WIRES THROUGH THE SLOT IN THE BOTTOM OF THE HEATSINK, BEFORE SOLDERING.
5. INSTALL THE TUBE BOARD ASSEMBLY, MAKING SURE THAT Q310 IS FOLDED AGAINST THE PCB.
6. INSTALL THE TUBES, WITH THE SQUARE RUBBER DONUTS IN PLACE, AT THE TOP OF THE TUBES, AS SHOWN.



THIS DRAWING DOCUMENT CONTAINS INFORMATION WHICH IS PROPRIETARY TO AND THE PROPERTY OF ADA, INC. AND MAY NOT BE USED, REPRODUCED OR DISCLOSED IN ANY MANNER WITHOUT THE EXPRESSED CONSENT OF ADA, INC.

ADA SIGNAL PROCESSORS, INC.
420 LESSER STREET, OAKLAND, CA 94601

FILE NAME: B898B.DWG

TITLE MP-2, POST DIP/TOUCH-UP ASSEMBLY

CHECKED BY:

DATE:

APPROVED BY:

DATE:

DRAWN: D.WIRT

ENGR:

© COPYRIGHT 1993

SCALE:

SIZE B DRAWING NO. 898

REV B

DATE: 10/7/93

SHEET 1 OF 1