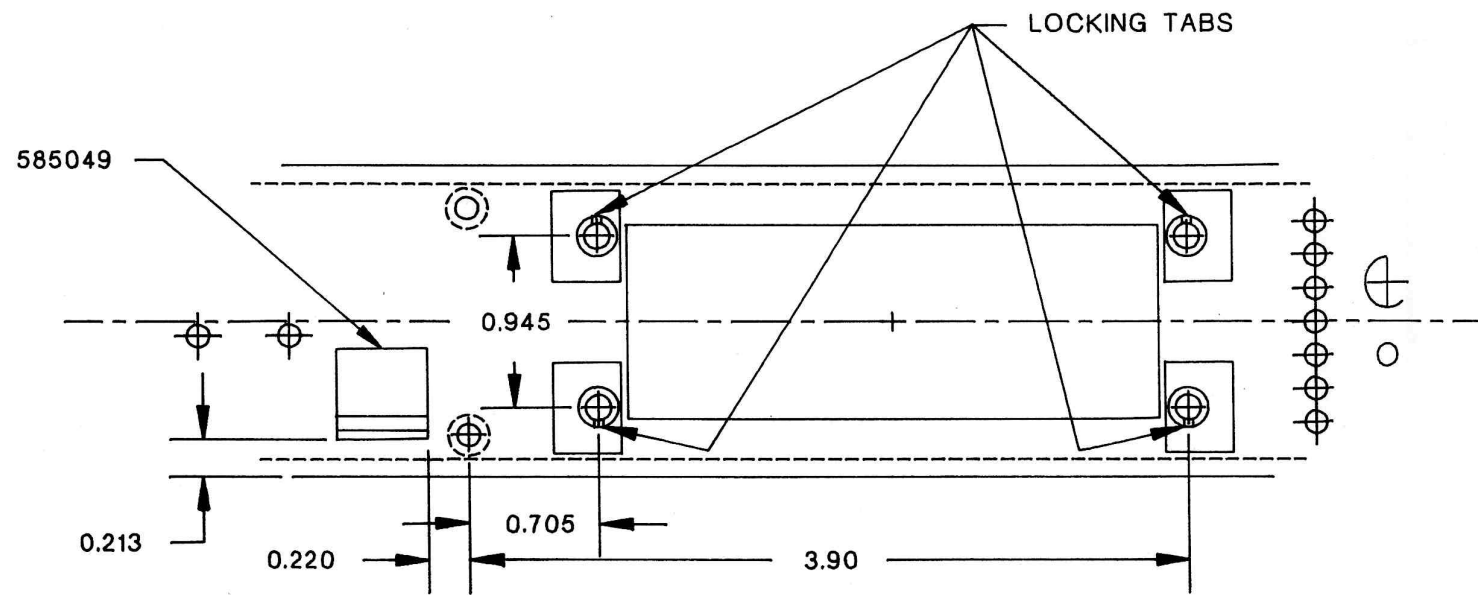
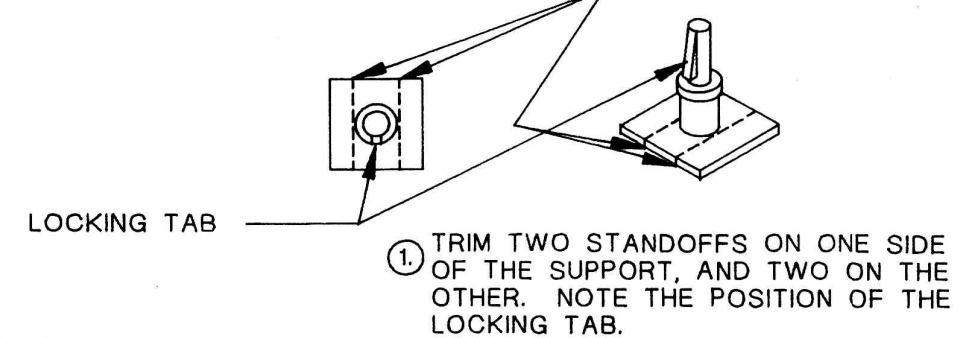
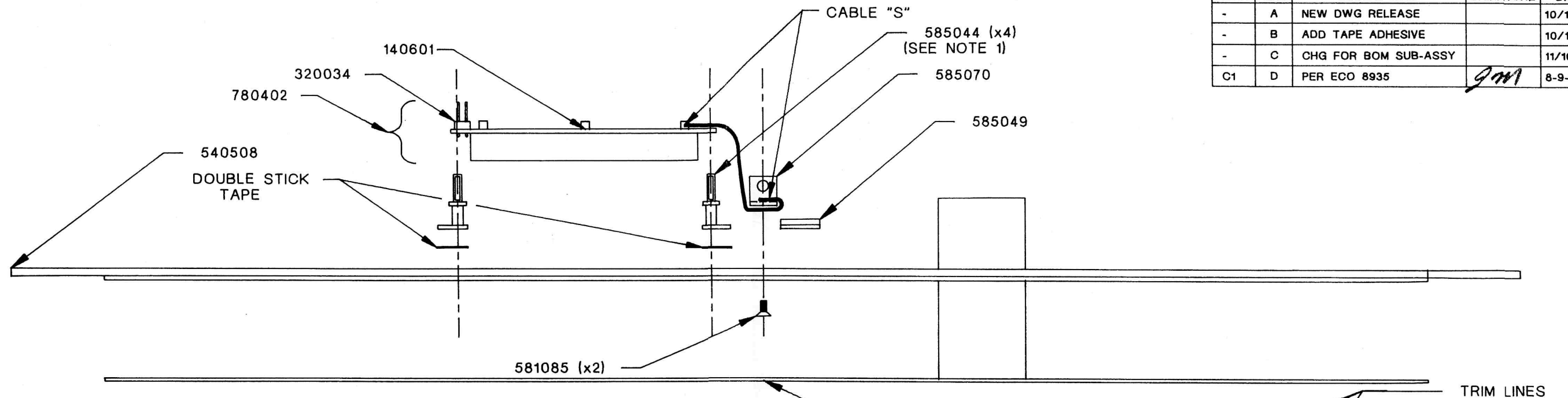


REVISION HISTORY				
ZONE	REV.	DESCRIPTION	SIGNATURE	DATE
-	A	NEW DWG RELEASE		10/11/93
-	B	ADD TAPE ADHESIVE		10/18/93
-	C	CHG FOR BOM SUB-ASSY		11/16/93
C1	D	PER ECO 8935	<i>gmm</i>	8-9-94



NOTES:

- ① REMOVE 1/8" (MIN) FROM OPPOSITE SIDES (2 EACH, TOTAL OF 4) OF 5850441 PCB STANDOFFS.
2. APPLY DOUBLE STICK TAPE TO THE BOTTOM OF THE STANDOFFS (IF NECESSARY).
3. USING THE LCD STANDOFF MOUNTING FIXTURE, POSITION AND MOUNT THE STANDOFFS AND THE PCB GUIDE (585049). POSITION THE LOCKING TABS AS SHOWN.
4. POSITION THE LCD READOUT AS SHOWN, AND SNAP INTO PLACE.
5. SOLDER A 2-1/2" WIRE SCRAP TO THE MIDDLE OF THE U-BRACKET (585070), AND FOLD UNDER, AS SHOWN. MOUNT THE U-BRACKET USING TWO 581085 SCREWS, AND SOLDER THE OTHER END OF THE WIRE TO AN LCD BEZEL TAB.
6. POSITION AND MOUNT MEMBRANE SWITCH.

THIS DRAWING DOCUMENT CONTAINS INFORMATION WHICH IS PROPRIETARY TO AND THE PROPERTY OF ADA, INC. AND MAY NOT BE USED, REPRODUCED OR DISCLOSED IN ANY MANNER WITHOUT THE EXPRESSED CONSENT OF ADA, INC.

**ADA SIGNAL PROCESSORS, INC.**  
420 LESSER STREET, OAKLAND, CA 94601

FILE NAME: B904D.DWG  
CHECKED BY:  
DATE:  
APPROVED BY:  
DATE:

TITLE: MP-2, FRONT PANEL SUBASSEMBLY (780805)  
DRAWN: D.WIRT  
ENGR:  
SIZE: B  
DRAWING NO.: 904  
REV: D  
DATE: 02/16/92  
SHEET 1 OF 1