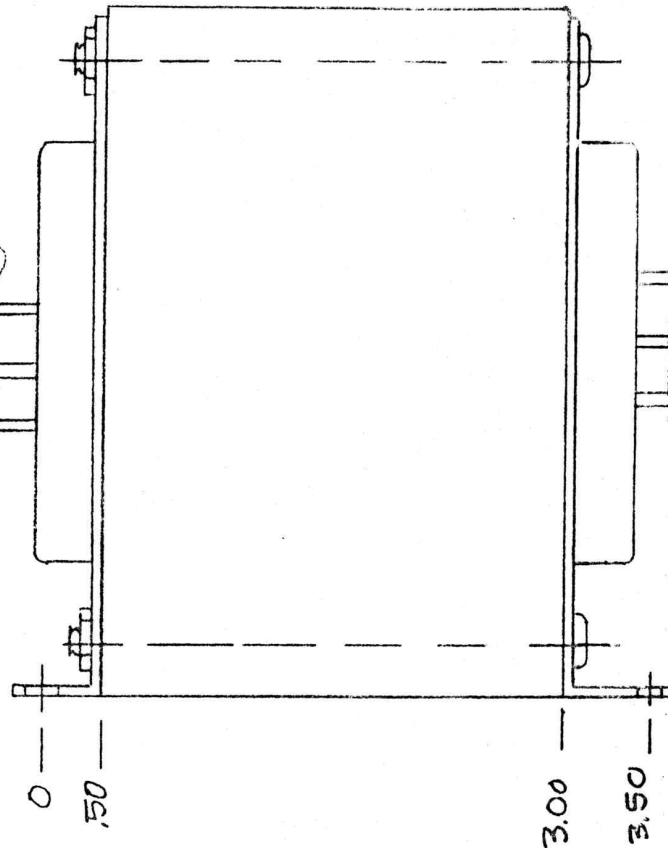
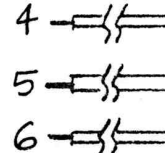
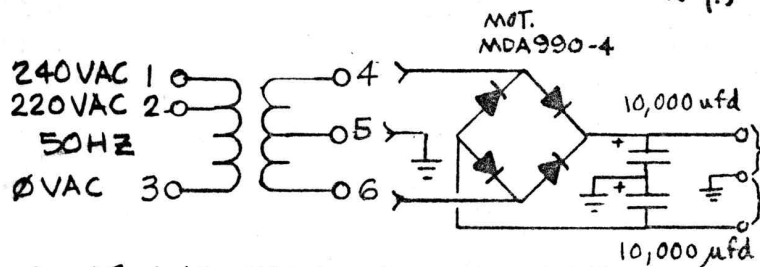
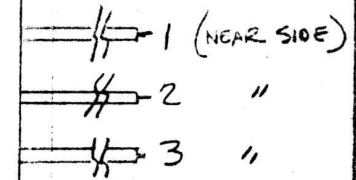


L=8"
(NEAR SIDE)



L=10"



43VDC @ 3.9 ADC
43VDC @ 3.9 ADC

A	REMOVE EXTRA BRACKET 1	3-3-89
B	CORRECT WIRE LENGTH	3-29-89

1. 18 AWG WIRE ON ALL TERMINALS
2. VA [SEE D.C. NOTES]
3. EI-125 X 2-7/16
4. 1500 V HIPOT
5. VACUUM IMPREGNATE
6. UL LISTED COMPONENTS.



XFMR, PWR B200S 220/240 50HZ (240079)		
SCALE: 5:1	APPROVED BY: 7-25-88 DJT	DRAWN BY DJT
DATE:		REVISED
ADA SIGNAL PROCESSORS, INC. 7303 D EDGEWATER DR., OAKLAND, CA 94621		
		DRAWING NUMBER REV A 520 C